



# RIVER PLACE

# The Osprey

CONVENTIONAL TOWNHOME  
3 BEDROOMS + LOFT  
3.5 BATHROOMS

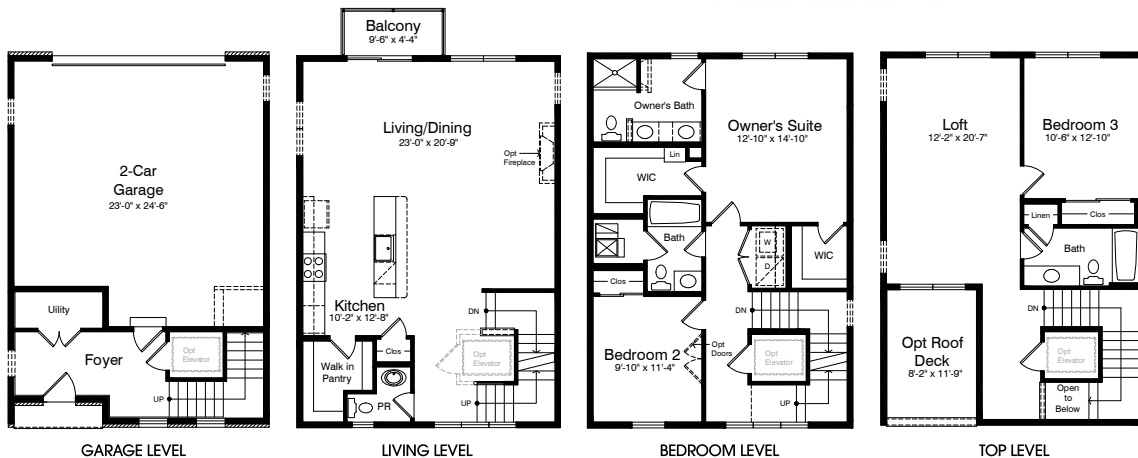


FRONT ELEVATION



REAR ELEVATION

- Three spacious bedrooms + large flex space
- Two-car garage
- Spacious, well appointed kitchen with walk-in pantry and island seating for four
- 9' ceilings and tall windows on living level
- Rear balcony with sliding glass door
- Optional roof deck to enjoy river views
- Extensive storage
- Optional elevator and fourth bedroom
- Many exciting ways to customize and personalize your home!



Illustrations are artist's conceptual renderings. Details, colors and dimensions are subject to change and field variation. Window locations and hand of unit may vary according to position in building.